

A NIGEL HANLEY MUSIC ARRANGEMENT

I BELIEVE

Music & Lyrics by Ervin Drake, Al Stillman, Jimmy Shirl,
Irvin Graham

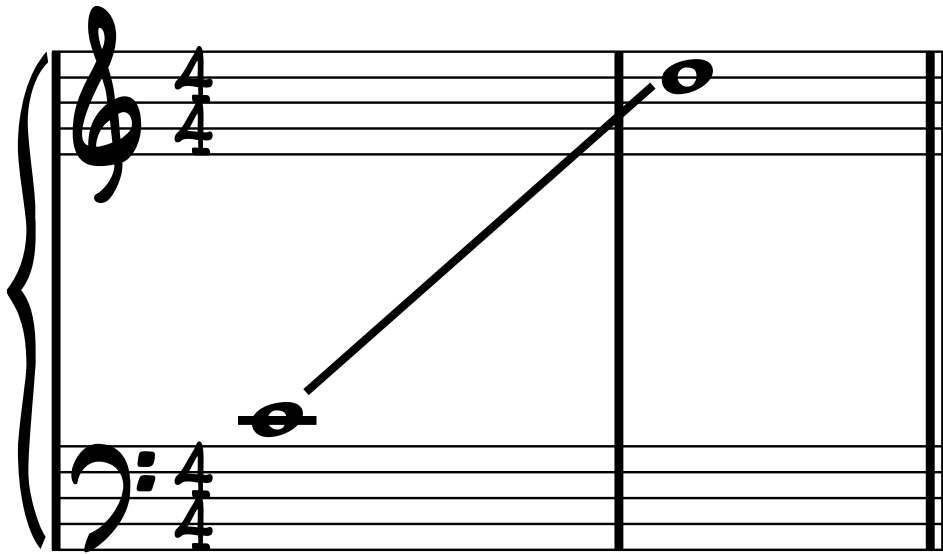
Key of C

ARR. NIGEL HANLEY

8-PC POP CABARET BAND CHART

Rhythm Section	4pc Horn Section	
Piano	Trumpet	
Guitar	Alto Sax	
Bass	Tenor Sax	
Drums	Trombone	Lyric Sheet

VOCAL RANGE



TRO © Copyright 1952 (Renewed) and 1953 (Renewed) Hampshire House Publishing Corp., New York, NY, Lindabet Music Corp. c/o The Songwriters Guild Of America, Nashville, TN, L And S Freedom Music, Tadzio Music Co. and Adaken Music Group All Rights for L And S Freedom Music and Tadzio Music Co. Administered in the U.S. by Concord Sounds c/o Concord Music Publishing All Rights for Adaken Music Group Administered in the U.S. by Atlas Music Publishing International Copyright Secured All Rights Reserved Including Public Performance For Profit Used by Permission

